



## An Eagle Valley Trout Unlimited & Roundup River Ranch Volunteer Request

Session 1:	July 9 <sup>th</sup> & 11 <sup>th</sup>	10:00am-12:00pm / 2:00pm-4:00pm
Session 2:	July 18 <sup>th</sup> & 20 <sup>th</sup>	10:00am-12:00pm / 2:00pm-4:00pm
Session 3:	July 27 <sup>th</sup> & 29 <sup>th</sup>	10:00am-12:00pm / 2:00pm-4:00pm
Session 4:	August 8 <sup>th</sup> & 10 <sup>th</sup>	10:00am-12:00pm / 2:00pm-4:00pm
Family Session 1:	September 24 <sup>th</sup> & 25 <sup>th</sup>	All Day
Family Session 2:	October 8 <sup>th</sup> & 9 <sup>th</sup>	All Day

## THE OPPORTUNITY

Eagle Valley TU has partnered with the staff at the Roundup River Ranch to offer campers and their families a unique, inviting and challenging introduction to the sport of fishing, and more specifically, *on the fly*. We are asking for your help in filling the various dates and times listed on page one with volunteers as we would love to share this one of a kind opportunity to enrich the lives of these children.

We could not be more excited to be involved and are well on our way to stocking the pond that has been constructed and procuring all the necessary equipment to make the experience as fun for the campers as I'm sure it will be for us.

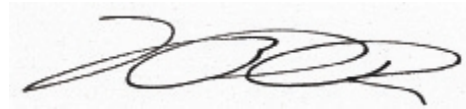
Additional information on the Roundup River Ranch and the Association of Hole in the Wall Camps is listed below for your reference.

If you are interested in lending a hand or learning more about what we are doing to help please do not hesitate to contact either one of us. We hope you will join us out at camp this summer!!!

Sincerely,



Alexander K. Schaefer  
President Eagle Valley Trout Unlimited  
970-470-1844  
[alex@eaglevalleytu.org](mailto:alex@eaglevalleytu.org)



Nicolas Rader  
Vice President Eagle Valley Trout Unlimited  
970-331-6019  
[nick@eaglevalleytu.org](mailto:nick@eaglevalleytu.org)



Roundup River Ranch - [www.RoundupRiverRanch.org](http://www.RoundupRiverRanch.org) - 970.748.9983  
Eagle Valley TU – [www.eaglevalleytu.org](http://www.eaglevalleytu.org) – 970.470.1844

## WHO WE ARE

Roundup River Ranch enriches the lives of children with life-threatening illnesses by providing free, year-round camping experiences with appropriate medical care that are **FUN, SAFE AND EMPOWERING**. The camp is a provisional member of the Association of Hole in the Wall Camps, the world's largest family of medical specialty camps for kids founded by Paul Newman over two decades ago.

## CHILDREN SERVED

- Our camp focuses on a wide variety of life-threatening illnesses to treat the greatest number of children in need including arthritis and rheumatologic conditions, asthma and severe respiratory diseases, cancer, cardiovascular conditions, diabetes, epilepsy, hemophilia, HIV/AIDS, sickle cell anemia, spina bifida, traumatic brain injuries, burn injuries, organ transplants, others as appropriate
- Children from an eleven state region, to include: Colorado, Wyoming, Montana, New Mexico, Kansas, Nebraska, North and South Dakota, Oklahoma, Utah, and Texas. 70% of campers will reside in Colorado.
- Children between the ages of 7 and 17 are referred from medical staff within our established region with a diagnosis of one of the above life-threatening illnesses

## HOW WE HELP

Camp is **FREE OF CHARGE** to campers and their families. Parents will look to the camp as a safe, medically supported place for their children to have fun away from hospitals. The camp will be a positive, loving place where campers, parents, siblings, volunteers and staff will benefit from personal enrichment and life-changing experiences. The Children's Hospital in Denver serves as our Founding Medical Partner ensuring our campers receive the highest level of medical support and recruiting from a pediatric facility that serves a similar geographic footprint.

## LOCATION

Two hours west of Denver, nestled east of Glenwood Canyon, off Interstate 70 along the Colorado River, an 85 acre campsite sits at an elevation of 6,300 feet, ensuring no adverse impact on illness. Close proximity to The Children's Hospital in Denver, the Denver International Airport and the Eagle County Airport provides for convenient transportation for our campers, which is important to a child attending camp or traveling on their own for the first time.

## ABOUT THE ASSOCIATION OF HOLE IN THE WALL CAMPS

Roundup River Ranch is a provisional member of the Association of Hole in the Wall Camps. As the world's largest family of camps for children with serious illnesses, the Association offers campers the chance to restore hope and recapture their childhood through recreational, inclusive, intentional



Roundup River Ranch - [www.RoundupRiverRanch.org](http://www.RoundupRiverRanch.org) - 970.748.9983  
Eagle Valley TU – [www.eaglevalleytu.org](http://www.eaglevalleytu.org) – 970.470.1844

programming and year-round support that provides encouragement, motivation and confidence. Hole in the Wall Camps present an opportunity for children to regain their inner strength, build self-confidence and reclaim control over their medical conditions. All of this is done free of charge.

In 1988, actor Paul Newman’s dream of opening a camp for children with serious medical conditions became a reality, and children whose lives had been interrupted by illness were able to put their worries aside and enjoy a carefree camp experience. Soon thereafter, the Association of Hole in the Wall Camps expanded into a growing worldwide movement enabling children to recapture their childhood through the simple, but profound, understanding that laughter is the best medicine.

## **CHILDREN SERVED BY HOLE IN THE WALL CAMPS**

Today, children across the globe who spend much of their time in hospitals and doctor’s offices attend Hole in the Wall Camps free of charge. For more than 20 years, the Association of Hole in the Wall Camps has given more than 200,000 children the chance to be a kid again. The family of camps includes 12 operational camps worldwide and one other camp in development Washington.

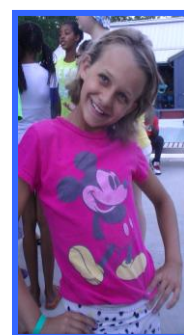
## **ROUNDUP RIVER RANCH’S AFFILIATION**

Roundup River Ranch is a provisional member and will apply for full membership after opening in 2011. From programmatic support, medical standards, volunteer training, guidelines and best practices, our camp receives numerous benefits from being a part of the Association that will enable us to provide campers with safe, quality, and empowering experiences.

As the largest family of medical-specialty camps, the Association of Hole in the Wall Camps is viewed as setting the standard for excellence in the industry. The magic of camp transforms the lives of all who attend; from campers to staff to volunteers, the experience of the attending a Hole in the Wall Camp touches one’s heart forever. To learn more about the camps go to [www.holeinthewallcamps.org](http://www.holeinthewallcamps.org).

“It’s not that children say, ‘Thank you for a wonderful time’  
...it’s that they say, ‘Thank you for changing my life.’”

—Paul Newman



Roundup River Ranch - [www.RoundupRiverRanch.org](http://www.RoundupRiverRanch.org) - 970.748.9983  
Eagle Valley TU – [www.eaglevalleytu.org](http://www.eaglevalleytu.org) – 970.470.1844